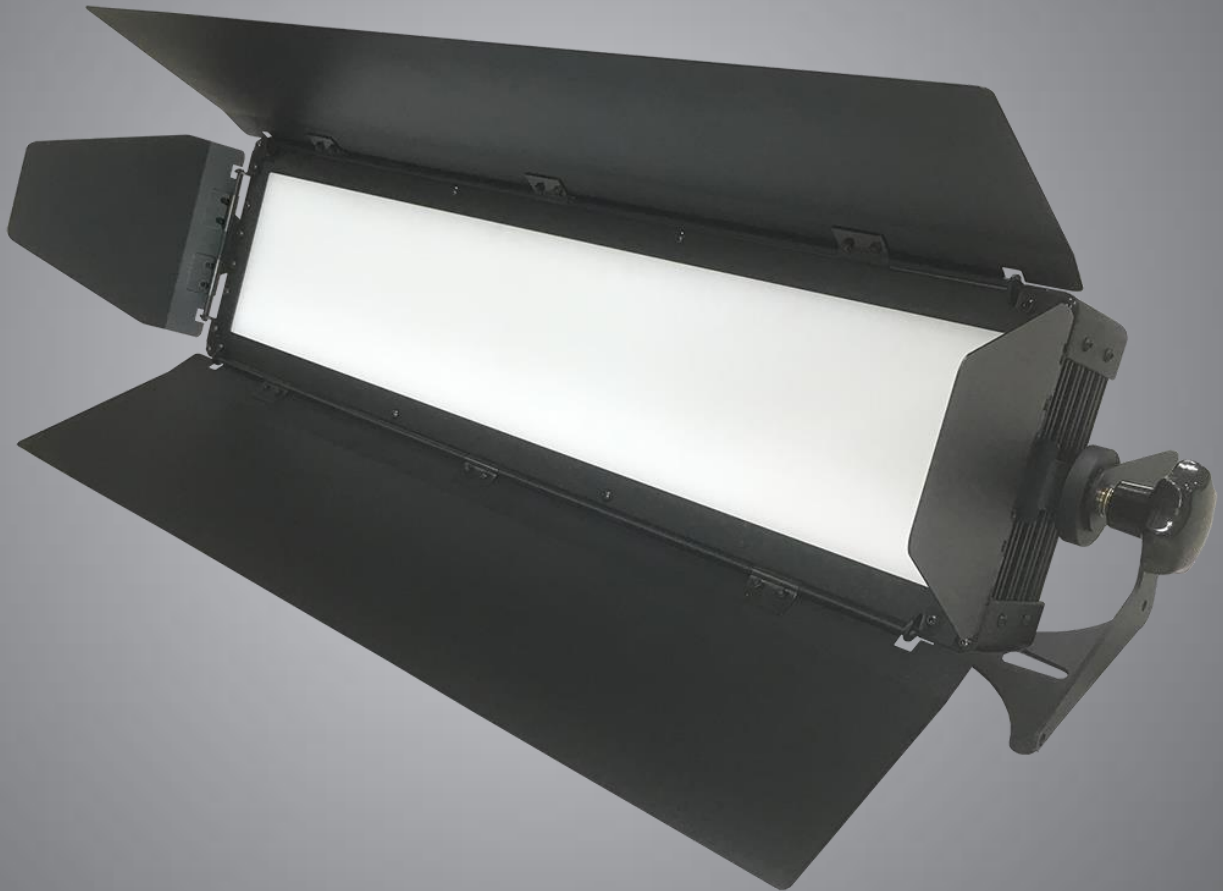


LED EDGE PANEL LIGHT

 ALPHA LITE

L1360



Ultra HD
Lighting Quality



Side Reflection
Lighting System



Quiet
(No Fan)



High CRI
True Color



High TLCI
True Color



Flicker Free



Smart Touch
Control



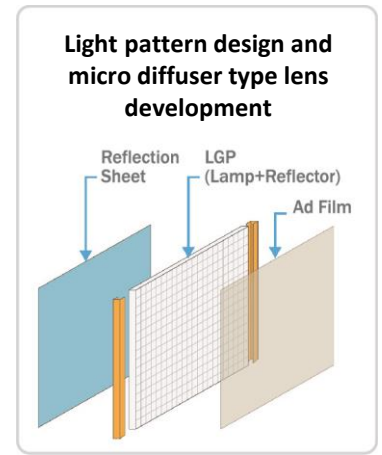
USB Firmware
Upgrade



Long
LED Lifetime

■ Fixture Information

- Flat light source lighting fixture, which is mainly used in broadcast studio, can create a variety of atmospheres in the set.
- Excellent light quality, and average CRI 95~98 / R9, R12 are CRI 90 or higher
- The LED source sets on the side(edge) with reflection and pattern optical technology applied.
- The LED source is not directly visible, no glare and extremely soft light distribution
- No fan and noiseless
- 2900~6000K color temperature control function
- Support RDM network communication and various mode setting possible
- Smart touch control method makes it easy and convenient to check all information at a glance
- Long life, reduce maintenance costs and power consumption.



■ Fixture Information

Power Input Voltage	AC 100 ~ 240V, 50/60Hz
Power Consumption (Max)	150W
LED Chip	0.5W 3030 PKG LED + Edge Reflector
Beam Angle	135°
Color Temperature	Full 2,900 - 6,000K (VCT) / (Option) Min 2800 - Max 6500K
Dimming	0~100% 16-bit
Supported Protocols	DMX512 / DMX512 RDM / Option Wireless DMX512 / Wireless RDM
Dimension (mm / inch)	816 x 282 x 112 / 32.1 x 11.1 x 4.4 (WHD) with Manual Yoke
Weight (kg / lbs)	8.3 / 18.3

■ Photometric Diagram

